

135 g/m²

Oxford

Možné prát na 60°C

POPIS:

Cotton rich polycotton Oxford fabric with Easy Care finish

Soft button-down collar

Cross stitched mother-of-pearl effect buttons (except Oxford Blue: mother-of-pearl effect white buttons)

Short sleeves with narrow cuffs

The exclusive B&C Tie-Fix©

Back yoke with 2 overstitched side pleats

Left chest pocket

Inside lap seams for perfect finishing

Horizontal last buttonhole

Mitre-shaped bottom hem side reinforcement

Curved bottom hem



TARIFNÍ KÓD: 62052000

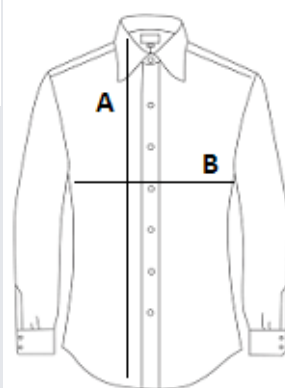


ZEMĚ PŮVODU

Bangladesh

ROZMĚRY (CM)

	S
Ks./📏	10
Délka (A)	80.00
Šířka přes prsa (B)	55,5



BARVY:

 Blue Chip