

BCSMP21 B&C BLACK TIE LSL /MEN **Outlet****POPIS**

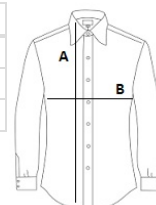
135 g/m<sup>2</sup>  
 Stretch poplin  
 2-button cut-away collar  
 Cross stitched mother-of-pearl effect buttons  
 2-button adjustable cuffs  
 a. Angular cuffs & square-shaped gauntlets  
 b. Additional cufflink buttonholes  
 Short modern back yoke  
 Inside lap seams for perfect finish  
 Horizontal last buttonhole  
 Square-shaped bottom hem side reinforcement  
 Shorter length - can be worn untucked  
 Curved bottom hem  
 Darts at back panel

**Certifikáty:**STANDARD  
100**Země původu:**

Bangladesh

**ROZMĚRY (CM)**

	S	M	L	XL	2XL	3XL	4XL
<b>Ks.</b>	10	10	10	10	10	10	10
<b>Délka (A)</b>	73	74	76	78	79	81	82
<b>Šířka přes prsa (B)</b>	54	56,5	61,5	66,5	69	74	76,5

**BARVY:**

Black
  Coffee Bean
  Luxurious Red
  White