

BCSMP22 B&C BLACK TIE SSL /MEN **Outlet****POPIS**

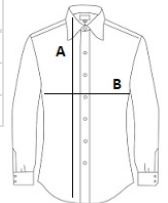
- 135 g/m<sup>2</sup>
- Stretch poplin
- Cut-away collar
- Cross stitched mother-of-pearl effect buttons
- Folded hem sleeves
- Short modern back yoke
- Inside lap seams for perfect finish
- Shorter length - can be worn untucked
- Curved bottom hem
- Darts at back panel

**Certifikáty:**STANDARD  
100**Země původu:**

Bangladesh

**ROZMĚRY (CM)**

	<b>S</b>	<b>M</b>
<b>Ks./</b>	10	10
<b>Délka (A)</b>	73	74
<b>Šířka přes prsa (B)</b>	36,5	37

**BARVY:**

- Luxurious Red
- White