

120 g/m²

100% Bavlna

Washable at 40°C

POPIS:

Fine 100% cotton poplin with Easy Care finish

Cut-away collar

Cross stitched mother-of-pearl effect buttons

Folded hem sleeves

The exclusive B&C Tie-Fix©

Left chest pocket

Back yoke with 2 overstitched side pleats

Inside lap seams for perfect finish

Horizontal last buttonhole

Square-shaped bottom hem reinforcement

Curved bottom hem



TARIFNÍ KÓD: 62052000

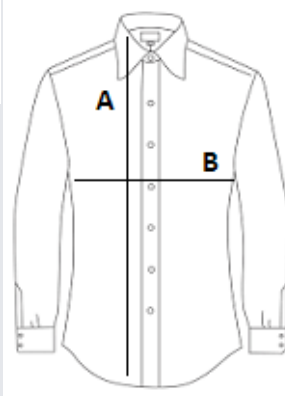
ZEMĚ PŮVODU

Bangladesh



ROZMĚRY (CM)

	S	M	L	XL
Ks./📦	10	10	10	10
Délka (A)	80.00	81.00	83.00	85.00
Šířka přes prsa (B)	56.00	58,5	63,5	68,5



BARVY:

 White

 Blue Chip

 Black