

LS17001 HEAVY CORE HOODIE **Nový**

**LANE SEVEN**
**POPIS**560 g/m<sup>2</sup>**Fabrication**

3-End French Terry

16.5 oz (560 GSM)

65% Cotton, 35% Recycled Polyester

**Features**

Heavyweight 3-End French Terry

No drawcords

Double layered hood with single needle top stitch at neck seam

Raglan sleeves

2x1 ribbing at cuff and waistband

Tear away tags

Under 5% shrinkage

**Navrhovaná dekorace:**

Digitální potisk (DTF), DTG, Výšivka, Sítotisk

**Země původu:**

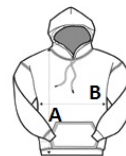
Pakistan



2026 : s. 178

**ROZMĚRY (CM)**

	XS	S	M	L	XL	2XL	3XL	4XL
<b>Ks./</b>	12	12	12	12	12	12	12	12
<b>Délka (A)</b>	66.04	68.58	71.12	73.66	76.20	78.74	81.28	
<b>Šířka přes prsa (B)</b>	45.72	50.80	55.88	60.96	66.04	71.12	76.20	

**BARVY:**
 Asphalt
  Black
  Cream