

PR605 'DAISY' HEALTHCARE TUNIC **Outlet****POPIS**195 g/m<sup>2</sup>**Fabric**

65% Polyester, 35% Cotton Twill

195gsm

**Features**

V-Neck with contrast trims

Covered front zip fastening

Covered popper fastening above zip

Side and back pleats for fitted styling

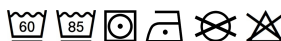
Curved side pockets with contrast piped edge

**Navrhovaná dekorace:**

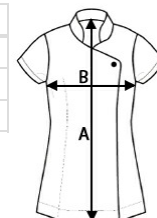
Výšivka, Tepelný lis, Sítotisk

**Země původu:**

Bangladesh

**ROZMĚRY (CM)**

	<b>XS</b>	<b>S</b>	<b>M</b>	<b>L</b>	<b>XL</b>	<b>2XL</b>	<b>3XL</b>	<b>4XL</b>	<b>5XL</b>
<b>Ks./</b>	24	24	24	24	24	24	24	24	24
<b>Délka (A)</b>	78	78.50	79	79.50	80	80.50	81	81.50	82
<b>Šířka přes prsa (B)</b>	45.50	48	50.50	53	55.50	58.50	61.50	64.50	67.50

**BARVY:**

Lilac/White    White/Navy