

SFL516 WOMEN'S CROPPED SLOUNGE HOODY **Outlet**
SF
CLOTHING

POPIS

280 g/m²

80% Cotton, 20% Polyester

Hoodie sweat with cropped raw hem

Set-in sleeves, with dropped shoulders

2x2 ribbed on cuffs

Single jersey back neck tape

Tear-out label, for easy re-branding

Certifikáty:



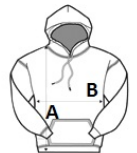
Země původu:

Pakistan



ROZMĚRY (CM)

	XS	S	M	L	XL
Ks./👤	24	24	24	24	24
Délka (A)	49.50	50.50	51.50	52.50	53.50
Šířka přes prsa (B)	53	56	59	62	65
Délka rukávu (C)	53	54	55	56	57



BARVY:

Black

Heather Grey