



native  spirit



350 g/m² Bio-Baumwolle Tasche No label Waschbar bei 40 °C

2026 : s. 439
2025 : s. 371

HAUPT-EIGENSCHAFTEN:

- 85 % organic cotton / 15 % post-consumer recycled polyester
- Ringspun combed cotton
- Straight fit
- 3-ply brushed fleece LSF (Low Shrinkage Fleece: pre-shrunk fleece)
- Enzyme-washed
- Recycled metal zip
- 1/2 circle in the back
- Kangaroo pocket with single over stitching
- 1 x 1 rib bottom hem and cuffs
- Double over stitching on cuffs, armholes and bottom hem
- Double dart hood in main material
- Zip inner finished with Jersey bias tape
- Inner taped neck with herringbone



TARIF-CODE: 61102099

EMPFOHLENE VEREDELUNG

Digitaldruck (DTF), Stickerei, Thermotransfer, Siebdruck

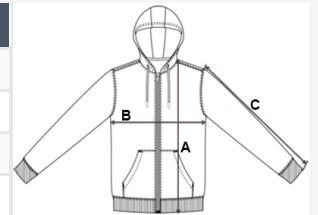
URSPRUNGSLAND

Bangladesh



GRÖSSENANGABE (CM)

	6/8	8/10	10/12	12/14
Stck./📦	20	20	20	20
Körperlänge	50, 70	55, 50	60, 30	65, 10
Brustweite (B)	38, 40	41, 00	44, 50	48, 00
Ärmellänge hinten Mitte (C)	44, 85	49, 25	53, 85	58, 45



FARBEN:

-  Navy Blue
-  Ivory
-  Moon Grey Heather
-  Jade Green
-  Hibiscus Red
-  Black