

PA223 TEAM SPORT PARKA



PROACT.®

HAUPTEIGENSCHAFTEN

200 g/m²

Outer: 100% polyester with PVC coating (water repellent) - 200 gsm

Inner padding: 100% polyester - 350 gsm

Lining: 100% polyester - 60 gsm

2 zipped side pockets

1 inside pocket

Ribbed neck and cuffs

Reflective tape on shoulders and sides

Lined hood

1 zip at chest and 1 zip at hem for decoration access

Ursprungsland:

China



2024: s. 624

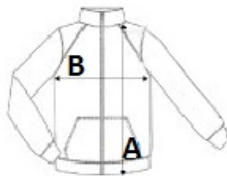
2023: s. 563



GRÖSSENANGABE (CM)

Größe Stck./ Körperlänge Brustweite (B) Ärmellänge hinten Mitte (C)

| Größe | Stck./ | Körperlänge | Brustweite (B) | Ärmellänge hinten Mitte (C) |
|-------|--------|-------------|----------------|-----------------------------|
| XS | 5 | 88 | 55 | 64 |
| S | 5 | 90 | 58 | 66 |
| M | 5 | 92 | 61 | 68 |
| L | 5 | 94 | 64 | 70 |
| XL | 5 | 96 | 67 | 72 |
| 2XL | 5 | 98 | 70 | 74 |
| 3XL | 5 | 100.75 | 74 | 76.25 |
| 4XL | 5 | 102.75 | 77 | 78.25 |



FARBEN:

Black Dark Grey Sporty Navy Sporty Red