

**BCSMO01 B&C OXFORD LSL** **Outlet****HAUPTEIGENSCHAFTEN**135 g/m<sup>2</sup>

Cotton rich polycotton Oxford fabric with Easy Care finish

Soft button-down collar

Cross stitched mother-of-pearl effect buttons (except Oxford Blue: mother-of-pearl effect white buttons)

2-button adjustable cuffs

a. Rounded cuffs &amp; mitre-shaped gauntlets

b. Additional cufflink buttonholes

The exclusive B&amp;C Tie-Fix®

Back yoke with 2 overstitched side pleats

Left chest pocket

Inside lap seams for perfect finish

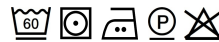
Horizontal last buttonhole

Mitre-shaped bottom hem side reinforcement

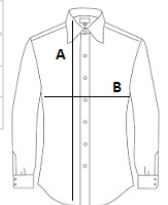
Curved bottom hem

**Zertifizierungen:**STANDARD  
100**Ursprungsland:**

Bangladesh

**GRÖSSENANGABE (CM)**

	<b>S</b>	<b>M</b>	<b>L</b>	<b>XL</b>	<b>5XL</b>
<b>Stck./</b>	10	10	10	10	10
<b>Körperlänge</b>	80	81	83	85	90
<b>Brustweite (B)</b>	55,5	58	63	68	80,5

**FARBEN:**

Black
  Blue Chip
  Silver Moon
  White