

135 g/m²

Oxford

Waschbar bei 60 °C

HAUPT-EIGENSCHAFTEN:

Cotton rich polycotton Oxford fabric with Easy Care finish

Soft button-down collar

Cross stitched mother-of-pearl effect buttons (except Oxford Blue: mother-of-pearl effect white buttons)

Short sleeves with narrow cuffs

The exclusive B&C Tie-Fix©

Back yoke with 2 overstitched side pleats

Left chest pocket

Inside lap seams for perfect finishing

Horizontal last buttonhole

Mitre-shaped bottom hem side reinforcement

Curved bottom hem



TARIF-CODE: 62052000

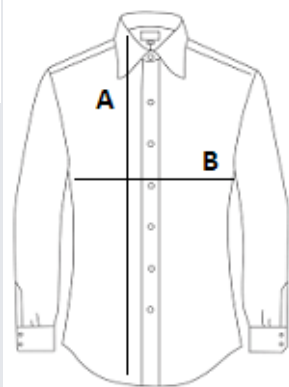


URSPRUNGSLAND

Bangladesh

GRÖSSENANGABE (CM)

| | S |
|----------------|-------|
| Stck./📦 | 10 |
| Körperlänge | 80.00 |
| Brustweite (B) | 55,5 |



FARBEN:

 Blue Chip