



115 g/m² Popeline Waschbar bei 40 °C

HAUPT-EIGENSCHAFTEN:

- Qualitative polycotton poplin with Easy Care finish
- Cut-away collar
- Cross stitched mother-of-pearl effect buttons
- 2-button adjustable cuffs
 - a. Angular cuffs & square-shaped gauntlets
 - b. Additional cufflink buttonholes
- Left chest pocket
- Back yoke with 2 overstitched side pleats
- Inside lap seams for perfect finish
- Horizontal last buttonhole
- Curved bottom hem



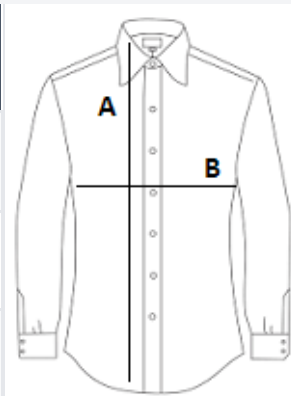
TARIF-CODE: 62052000



URSPRUNGSLAND
Bangladesh

GRÖSSENANGABE (CM)

	S	M	L
Stck./📦	10	10	10
Körperlänge	80.00	81.00	83.00
Brustweite (B)	56.00	58,5	63,5



FARBEN:

■ Deep Red

■ Black