

BCSWO03 B&C OXFORD LSL /WOMEN **Outlet****HAUPTEIGENSCHAFTEN**135 g/m²

Cotton rich polycotton Oxford fabric with Easy Care finish

Soft feminine collar

Cross stitched mother-of-pearl effect buttons (except Oxford Blue: mother-of-pearl effect white buttons)

2-button adjustable cuffs

a. Rounded cuffs

b. Additional cufflink buttonholes

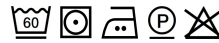
Darts at bustline & back panel for a feminine shape

Horizontal last buttonhole

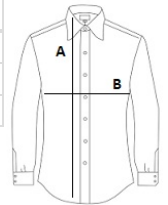
Curved bottom hem

Zertifizierungen:STANDARD
100**Ursprungsland:**

Bangladesh

**GRÖSSENANGABE (CM)**

	XS	S
Stck./	10	10
Körperlänge	65	66
Brustweite (B)	45,5	48

**FARBEN:**
 Silver Moon
 White