

135 g/m²

Gekämmte Baumwolle

Schmale Passform

Washbar bei 60 °C

HAUPTTEIGENSCHAFTEN:

Cotton rich polycotton Oxford fabric with Easy Care finish

Soft feminine collar

Cross stitched mother-of-pearl effect buttons (except Oxford Blue: mother-of-pearl effect white buttons)

Short sleeves with narrow cuffs

Darts at bustline & back panel for a feminine shape

Horizontal last buttonhole

Curved bottom hem



TARIF-CODE: 62063000

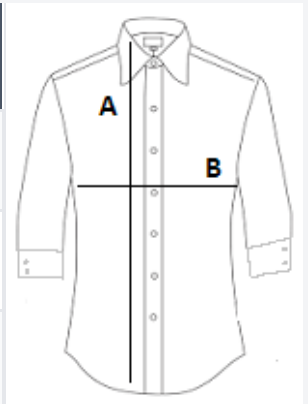
URSPRUNGSLAND

Bangladesh



GRÖSSENANGABE (CM)

	3XL
Stck./📦	10
Körperlänge	71.00
Brustweite (B)	60,5



FARBEN:

 Black