

BCSWT83 B&C SHARP LSL /WOMEN **Outlet**

HAUPTEIGENSCHAFTEN

- 100% cotton twill with Easy Care finish
- Soft feminine collar
- Cross stitched mother-of-pearl effect buttons
- 2-button adjustable cuffs
 - a. Angular cuffs & thin square-gauntlets
 - b. Additional cufflink buttonholes
- Darts at bustline & back panel for a feminine shape
- Horizontal last buttonhole
- Curved bottom hem

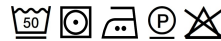
Zertifizierungen:



STANDARD
100

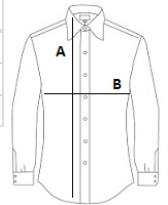
Ursprungsland:

Bangladesh



GRÖSSENANGABE (CM)

	XS	S	M	L	XL
Stck./📦	10	10	10	10	10
Körperlänge	65	66	67	68	69
Brustweite (B)	45,5	48	50,5	53	55,5



FARBEN:

Black
 Navy
 White