

IB411 LADIES' BASIC SOFTSHELL JACKET **Neu**

iDeal Basic
BRAND

HAUPTEIGENSCHAFTEN
280 g/m²

95% polyester / 5% elastane

2-layer softshell with water-repellent treatment

Inner layer: 100% black microfleece polyester

Straight fit

Two side pockets lined with polytricot, nylon zips and black zip pullers

Black nylon zip fastening with chin guard and puller

Shoulder and back yokes with topstitching

Black inner neck tape

Double-needle finish at sleeve and bottom hems

Tear-away brand label

Zertifizierungen:
STANDARD
100
Ursprungsland:

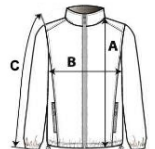
Bangladesh



2026 : s. 201


GRÖSSENANGABE (CM)

	XS	S	M	L	XL	2XL	3XL	4XL
Stck./	10	10	10	10	10	10	10	10
Körperlänge	61.75	63.75	65.75	67.75	69.75	71.75	73.75	75.75
Brustweite (B)	44	47	50	53	56	59	62	65
Ärmellänge hinten Mitte (C)	61.50	62.50	63.50	64.50	65.50	66.50	67.50	68.50


FARBEN:
 Ideal Black
 Ideal Dark Grey
 Ideal Navy
 Ideal Red
 Ideal Royal Blue