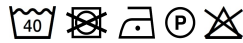


KA585 LADIES' NEVADA LONG SLEEVE COTTON SHIRT **Outlet****KARIBAN****HAUPTEIGENSCHAFTEN**

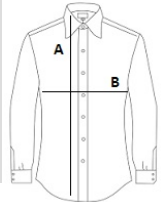
155 g/m²
 100% cotton
 Twill fabric with peached soft touch
 Matching buttons
 Chest pocket on left side
 Contrast Oxford silver inner collar stand and cuffs
 Back with single pleat and lined yoke
 Felled seam finish
 Adjustable cuff with button pointed tab end
 Spare button
 Certified STANDARD 100 by OEKO-TEX® N° CQ 1007/8, IFTH

Zertifizierungen:STANDARD
100**Ursprungsland:**

Bangladesh

**GRÖSSENANGABE (CM)**

	XS	S	M	L	XL	2XL
Stck./	20	20	20	20	20	20
Körperlänge	66	68	70	72	74	76
Brustweite (B)	47	50	53	56	59	62
Ärmellänge hinten Mitte (C)	59	60	61	62	63	64
Ausschnittlänge	37.50	38.75	40	41.25	42.50	43.75

**FARBEN:**

Angora Dark Grey Sky Blue