

## PK506 MEN'S LONG-SLEEVED TWILL SHIRT



KARIBAN  
PREMIUM

## HAUPTEIGENSCHAFTEN

- 130 g/m<sup>2</sup>
- 100% cotton
- Twill fabric
- Easy care (Easy care treatment)
- Superior quality 80x2 two-ply thread
- Cutaway collar with removable frame
- Mother of pearl buttons
- Upper back panel
- 2 darts in the back
- Slim fit
- 2-button round angle cuffs
- Inserts on the sides
- No brand label, only size label for easy decoration access

## Ursprungsland:

Türkiye



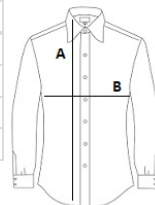
2026 : s. 241

2025 : s. 115



## GRÖSSENANGABE (CM)

	S	M	L	XL	2XL	3XL	4XL
Stck./📦	25	25	25	25	25	25	25
Körperlänge	74	76	78	80	82	84	86
Brustweite (B)	50.50	53.50	56.50	59.50	62.50	65.50	68.50
Ärmellänge hinten Mitte (C)	65	66	67	68	69	70	71



## FARBEN:

 Essential Light Blue
  White