

## PK507 LADIES' LONG-SLEEVED TWILL SHIRT

KARIBAN

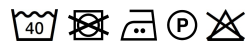
PREMIUM

## HAUPTEIGENSCHAFTEN

- 130 g/m<sup>2</sup>
- 100% cotton
- Twill fabric
- Easy care (Easy care treatment)
- Superior quality 80x2 two-ply thread
- Upper back panel
- Invisible button placket
- Mother of pearl buttons
- 2-button round angle cuffs
- No brand label, only size label for easy decoration access

## Ursprungsland:

Tunisia



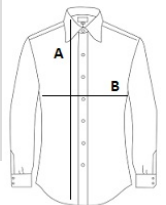
2026 : s. 241

2025 : s. 115



## GRÖSSENANGABE (CM)

	XS	S	M	L	XL	2XL	3XL
Stck./📦	25	25	25	25	25	25	25
Körperlänge	68	70	72	74	76	78	80
Brustweite (B)	46.50	49.50	52.50	55.50	58.50	61.50	64.50
Ärmellänge hinten Mitte (C)	59	60	61	62	63	64	65



## FARBEN:

 Essential Light Blue
  White