

## RETRA590 ESSENTIAL HYBRID JACKET



REGATTA  
PROFESSIONAL



WARM LOFT

EXTOL STRETCH

WATER REPELLENT

### HAUPTEIGENSCHAFTEN

84 g/m<sup>2</sup>

#### Fabric Information

Lightweight 20d polyamide fabric

Extol stretch sleeves and side panels for fit and freedom of movement

Durable water repellent finish

Warmloft down-touch lightweight insulation - 120gsm

2 zipped lower pockets

Stretch binding to collar, cuffs and hem

Supplied with 4 alternative colour zip pullers

Ideal for decoration

Made using recycled materials

#### Ursprungsland:

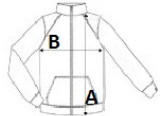
Bangladesh

2026 : s. 421



### GRÖSSENANGABE (CM)

	XS	S	M	L	XL	2XL	3XL
Stck./📦	12	12	12	12	12	12	12
Körperlänge	0	71	71	73,5	73,5	76	76
Brustweite (B)	0	51	54	57	61	66	70



### FARBEN:

Black

Navy