

RETRA681 CLASSIC 3 LAYER PRINTABLE SOFTSHELL **Outlet**
REGATTA
 PROFESSIONAL

CLASSICS
 GREAT QUALITY, GREAT VALUE

SOFTSHELL XPT

WATER REPELLENT

HAUPTEIGENSCHAFTEN300 g/m²**Fabric Information**

Warm backed woven Softshell XPT waterproof and breathable

3 layer membrane fabric

Wind resistant membrane fabric

AtI durable water repellent finish

Special Features

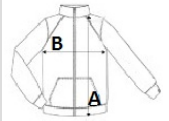
2 zippered lower pockets

Ursprungsland:

China

**GRÖSSENANGABE (CM)**

	S
Stck./	16
Körperlänge	66
Brustweite (B)	50.50
Ärmellänge hinten Mitte (C)	63

**FARBEN:**

Navy/Seal Grey