

RETRA724 PRO BALLISTIC SOFTSHELL **Outlet****REGATTA**
PROFESSIONAL**HAUPTEIGENSCHAFTEN****Fabric Information**

100% softshell polyester fabric

100% recycled fleece lining

Warm backed softshell fabric

Durable water repellent polyester fabric

Special Features

Durable abrasion resistant ballistic nylon strategic panels, offering improved protection against sharp objects

Reflective details for enhanced visibility

Quick drying

2 lower pockets

Adjustable cuffs

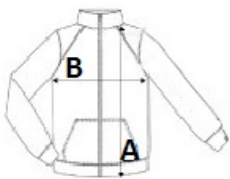
Made using recycled materials

Ursprungsland:

China

**GRÖSSENANGABE (CM)**

	S	M	L	XL	2XL	3XL
Stck./	16	16	16	16	16	16
Körperlänge	68	70,5	73	73	75,5	75,5
Brustweite (B)	51	55	59	63	68	72

**FARBEN:**

Black

Navy