

RETRA728 ECO ABLAZE SOFTSHELL JACKET **Outlet**
REGATTA
 PROFESSIONAL

SOFTSHELL

HAUPTEIGENSCHAFTEN

270 g/m²**Fabric Information**

Polyester 100%

Warm backed woven Softshell

Outer fabric contains recycled polyester yarns

Printable Softshell fabric

Ideal for screen, transfer and vinyl printing

Special Features

Inner zip guard

This product has no external logo branding

Empfohlene Veredelung:

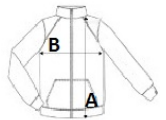
Stickerei, Thermotransfer, Siebdruck

Ursprungsland:

China


GRÖSSENANGABE (CM)

| | XS | S | M | L | XL | 2XL | 3XL | 4XL |
|------------------------------------|----|----|------|----|----|------|------|-----|
| Stck./ | 16 | 16 | 16 | 16 | 16 | 16 | 16 | 16 |
| Körperlänge | 68 | 68 | 70,5 | 73 | 73 | 75,5 | 75,5 | 78 |
| Brustweite (B) | 47 | 51 | 55 | 59 | 63 | 68 | 72 | 76 |
| Ärmellänge hinten Mitte (C) | 65 | 66 | 67 | 68 | 69 | 70 | 71 | 72 |


FARBEN:

 Black/Black

 French Blue/Navy

 Navy/French Blue

 Navy/Navy

 Seal Grey/Black