

AWJH065 WOMEN'S FASHION CROPPED ZOODIE **Outlet**



MAIN FEATURES

- 280 g/m²
- 80% Ringspun Cotton/20% Polyester
- Relaxed fit
- Cropped cut with drop shoulder design
- Full front Metal YKK Zip
- Ribbed cuffs and hem
- Brushed inner fleece
- Double fabric hood
- Flat lace drawcords
- Twin needle stitching detail
- Tear away label
- 100% cotton faced fabric

Suggested Decoration:
DTG, Embroidery, Heat transfer, Screen printing

Certifications:



Country Of Origin:
Pakistan

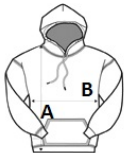


2024 : p. 430



SIZE SPECIFICATION (CM)

	XXS	XS	S	M	L	XL
Pcs./	24	24	24	24	24	24
Body Length (A)	45	47	49	51	53	55
Chest Width (B)	47	50	53	56	59	62
Sleeve Length (C)	52	53	54	55	56	57



COLORS:

- Arctic White
- Deep Black
- Dusty Green
- Dusty Pink
- Heather Grey