

JC116 WOMEN'S CROSS BACK T **Outlet**



MAIN FEATURES

- 160 g/m²
- Cotton poyester blended performance fabric
- Unique cross back styling
- Cropped length
- Flattering dropped curved hem at front
- Simple tearout label, perfect for rebranding
- Self fabric cuffs and hemFlat lock stitching
- UPF 40+ UV protection - TBC

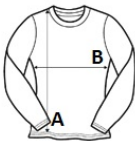
Suggested Decoration:
DTG, Heat transfer, Screen printing

Country Of Origin:
Bangladesh



SIZE SPECIFICATION (CM)

	XS	S	M	L	XL
Pcs./📦	40	40	40	40	40
Body Length (A)	55.50	57	60.50	63.50	65.50
Chest Width (B)	42.50	47.50	51.50	55.50	59.50
Sleeve Length (C)	67	68	69	70	71



COLORS:

- Arctic White
- Iron Grey
- Jet Black