

LE801 WOMEN'S 3-LAYER SOFTSHELL JACKET



LEGEND®
CLASSICS

MAIN FEATURES

300 g/m²
 3-layer bonded softshell fabric
 92% polyester / 8% elastane outer layer
 6000 mm water-resistant and 4500 g/m²/24h breathable membrane
 100% polyester micro-fleece inner layer
 Wind-resistant
 Stretch fabric
 Center front reverse coil zipper
 Inside storm placket with chin guard
 2 front pockets and 1 shoulder pocket with reverse coil zippers
 Tear-away label

Suggested Decoration:

Embroidery, Heat transfer

Certifications:



STANDARD
100

Country Of Origin:

Myanmar



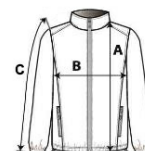
2026 : p. 195

2025 : p. 255



SIZE SPECIFICATION (CM)

	S	M	L	XL	2XL	3XL	4XL
Pcs./📦	12	12	12	12	12	12	12
Body Length (A)	60	62	64	66	68	70	72
Chest Width (B)	48	51	54	57	61	64	67
Sleeve Length (C)	60	61	62	63	64	65	66



COLORS:

■ Red	■ Azure Blue	■ Black	■ Charcoal	■ Forest Green	■ Heather Grey
■ Navy	■ Royal	□ White			