



**REGATTA**   
PROFESSIONAL

SOFTSHELL XPT

WATER REPELLENT

**CLASSICS**  
GREAT QUALITY. GREAT VALUE



300 g/m<sup>2</sup>

100% Polyester

Full zip

Washable at 40°C

MAIN FEATURES:

**Fabric Information**

Warm backed woven Softshell XPT waterproof and breathable

3 layer membrane fabric

Wind resistant membrane fabric

Atl durable water repellent finish

**Special Features**

2 zipped lower pockets



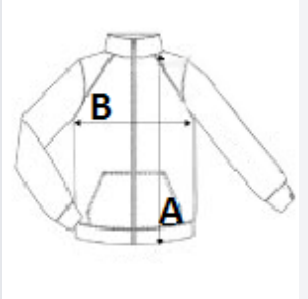
TARIFF CODE: **62014010**

COUNTRY OF ORIGIN

China

SIZE SPECIFICATION (CM)

	S
Pcs./📦	16
Body Length (A)	66.00
Chest Width (B)	50.50
Sleeve Length (C)	63.00



COLORS:

■ Navy/Seal Grey