

RETRA790 WOMEN'S FLUX SOFTSHELL BODYWARMER Outlet



REGATTA
PROFESSIONAL

SOFTSHELL

WATERREPELLENT

MAIN FEATURES

270 g/m²

Fabric Information

Warm backed woven stretch Softshell fabric
Wind resistant
Durable water repellent finish
Super soft handle
Quick drying fabric

Special Features

2 zipped lower pockets and 1 zipped chest pocket
Shaped fit

Colour shade differences may occur in Oxford Blue products

Suggested Decoration:

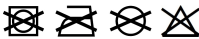
Embroidery, Heat transfer, Screen printing

Country Of Origin:

China

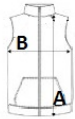


Wash dark colours separately



SIZE SPECIFICATION (CM)

	XS	S	M	L	XL	2XL	3XL
Pcs./📦	16	16	16	16	16	16	16
Body Length (A)	0	61	64	64	66	66	66
Chest Width (B)	0	46	48	51	53	56	58



COLORS:

■ All Black ■ Classic Red ■ Marl Grey/Black ■ Oxford Blue