

WK9105 FLEECE JACKET WITH REMOVABLE SLEEVES (ex.KA9105)



MAIN FEATURES

400 g/m²

EX KA9105

100% polyester

Outer: 100% polyester - 400 gsm

Reinforced inserts in 100% polyester taslon with acrylic coating

Polyester 210T inner sleeve lining

2 in 1 fleece jacket

2 zipped front pockets and 1 chest pocket with flap and tear release fastening

Tone on tone large yokes on shoulders and lower arms

Easy decoration access at front and back

Polyester lined removable sleeves for added comfort

Elasticated cuffs and hem

Certified STANDARD 100 by OEKO-TEX® N° CQ 1007/8, IFTH

Country Of Origin:

China, Bangladesh

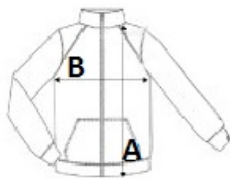
2024: **p. 523**

2023: **p. 459**



SIZE SPECIFICATION (CM)

	S	M	L	XL	2XL	3XL	4XL
Pcs./	10	10	10	10	10	10	10
Body Length (A)	70.25	72.50	74.75	77	79.25	82	84.25
Chest Width (B)	53	056	59	62	65	69	72
Sleeve Length (C)	67.50	69.50	71.50	73.50	75.50	77.75	79.75



COLORS:

- Black
- Convoy Grey
- Dark Grey
- Forest Green
- Navy
- Red
- Royal Blue