

135 g/m²

Oxford

Washable at 60°C

MAIN FEATURES:

Cotton rich polycotton Oxford fabric with Easy Care finish

Soft button-down collar

Cross stitched mother-of-pearl effect buttons (except Oxford Blue: mother-of-pearl effect white buttons)

Short sleeves with narrow cuffs

The exclusive B&C Tie-Fix©

Back yoke with 2 overstitched side pleats

Left chest pocket

Inside lap seams for perfect finishing

Horizontal last buttonhole

Mitre-shaped bottom hem side reinforcement

Curved bottom hem



TARIFF CODE: 62052000

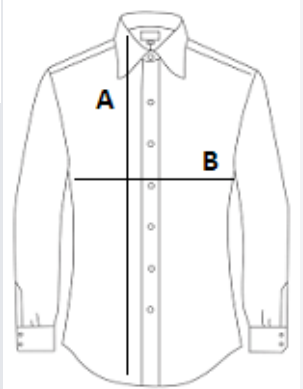


COUNTRY OF ORIGIN

Bangladesh

SIZE SPECIFICATION (CM)

	S
Pcs./📦	10
Body Length (A)	80.00
Chest Width (B)	55,5



COLORS:

 Blue Chip