

120 g/m<sup>2</sup>

100% Cotton

Washable at 40°C

## MAIN FEATURES:

Fine 100% cotton poplin with Easy Care finish

Cut-away collar

Cross stitched mother-of-pearl effect buttons

Folded hem sleeves

The exclusive B&amp;C Tie-Fix©

Left chest pocket

Back yoke with 2 overstitched side pleats

Inside lap seams for perfect finish

Horizontal last buttonhole

Square-shaped bottom hem reinforcement

Curved bottom hem



TARIFF CODE: 62052000

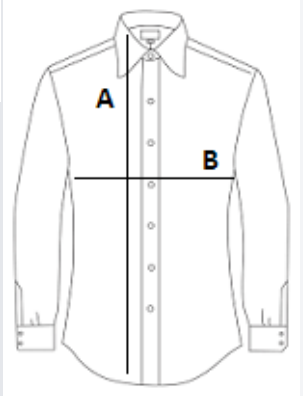
## COUNTRY OF ORIGIN

Bangladesh



## SIZE SPECIFICATION (CM)

	S	M	L	XL
Pcs./📦	10	10	10	10
Body Length (A)	80.00	81.00	83.00	85.00
Chest Width (B)	56.00	58,5	63,5	68,5



## COLORS:

 Black

 Blue Chip

 White