

BCSWO04 B&C OXFORD SSL /WOMEN**MAIN FEATURES**135 g/m²

Cotton rich polycotton Oxford fabric with Easy Care finish

Soft feminine collar

Cross stitched mother-of-pearl effect buttons (except Oxford Blue: mother-of-pearl effect white buttons)

Short sleeves with narrow cuffs

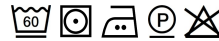
Darts at bustline & back panel for a feminine shape

Horizontal last buttonhole

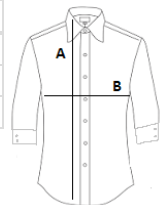
Curved bottom hem

Certifications:STANDARD
100**Country Of Origin:**

Bangladesh

**SIZE SPECIFICATION (CM)**

	3XL
Pcs./	10
Body Length (A)	71
Chest Width (B)	60,5

**COLORS:**

Black