

BCSWT84 B&C SHARP SSL /WOMEN **Outlet** **New****MAIN FEATURES**

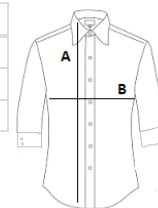
130 g/m²
 100% cotton twill with Easy Care finish
 Soft feminine collar
 Cross stitched mother-of-pearl effect buttons
 Folded hem sleeves
 Darts at bustline & back panel for a feminine shape
 Horizontal last buttonhole
 Curved bottom hem

Certifications:STANDARD
100**Country Of Origin:**

Bangladesh

**SIZE SPECIFICATION (CM)**

	4XL
Pcs./	10
Body Length (A)	72
Chest Width (B)	63

**COLORS:**

Dark Grey