

IB296 LADIES' PIQUE POLO SHIRT **New**



MAIN FEATURES

- 180 g/m²
- Solid colours: 100% cotton
- Ideal Oxford Grey: 90% cotton / 10% viscose
- Piqué knit
- Straight fit 1x1 ribbed collar and sleeve hem
- Placket with 4 tone-on-tone buttons
- Tone-on-tone inner neck tape
- Side slits
- Double-needle bottom hem finish
- Tear-away brand label

Country Of Origin:

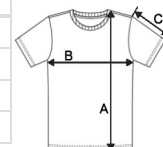
Bangladesh

📄 2026 : p. 88



SIZE SPECIFICATION (CM)

	XS	S	M	L	XL	2XL
Pcs./📦	50	50	50	50	50	50
Body Length (A)	61	63	65	67	69	71
Chest Width (B)	43	46	49	52	55	58
Sleeve Length (C)	15.25	16.00	16.75	17.50	18.25	19.00



COLORS:

- Ideal Atoll Blue
- Ideal Black
- Ideal Dark Grey
- Ideal Fuchsia
- Ideal Navy
- Ideal Orange
- Ideal Oxford Grey
- Ideal Raw Natural
- Ideal Red
- Ideal Royal Blue
- Ideal Sand
- Ideal White