

IB6173 LADIES PADDED BODYWARMER
iDeal Basic
BRAND
MAIN FEATURES

- 430 g/m²
- 100% polyester 290T
- Padding: 100% polyester
- Lining: 100% tone-on-tone 290T polyester
- Straight fit
- Stand-up collar
- Two side pockets lined in 290T with nylon zips and tone-on-tone zip pullers
- Two inner pockets
- Tone-on-tone nylon zip fastening with chin guard and puller
- Horizontal quilting
- Wider quilting bands (11 cm at the front, 14.5 cm at the back) to enhance decoration
- Tone-on-tone elastic bias finish at armholes and bottom hem
- Inner hanging loop at collar
- Packable product with storage pouch
- Tear-away brand label
- Injected padding: weight may vary depending on garment zones
- Total weight is indicative

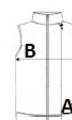
Certifications:**Country Of Origin:**

Myanmar

2026 : p. 386

**SIZE SPECIFICATION (CM)**

	XS	S	M	L	XL	2XL
Pcs./	15	15	15	15	15	15
Body Length (A)	61	63	65	67	69	71
Chest Width (B)	45	48	51	54	57	60

**COLORS:**

Black
 Dark Grey
 Ideal Red
 Ideal Royal Blue
 Ideal Urban Khaki
 Navy