

IB6175 MEN'S PADDED JACKET New



MAIN FEATURES

- 430 g/m²
- 100% polyester 290T
- Padding: 100% polyester
- Lining: 100% tone-on-tone 290T polyester
- Straight fit
- Stand-up collar
- Two side pockets lined in 290T with nylon zips and tone-on-tone zip pullers
- Two inner pockets
- Tone-on-tone nylon zip fastening with chin guard and puller
- Horizontal quilting
- Wider quilting bands (11 cm at the front, 14.5 cm at the back) to enhance decoration
- Tone-on-tone elastic bias finish at sleeve and bottom hems
- Inner hanging loop at collar
- Packable product with storage pouch
- Tear-away brand label
- Injected padding: weight may vary depending on garment zones
- Total weight is indicative

Certifications:

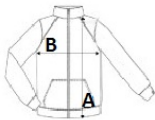


Country Of Origin:
Myanmar



SIZE SPECIFICATION (CM)

	S	M	L	XL	2XL	3XL	4XL
Pcs./📦	15	15	15	15	15	15	15
Body Length (A)	67	69	71	73	75	77	79
Chest Width (B)	53	56	59	62	65	68	71



COLORS:

- Black
- Dark Grey
- Navy