

JC060 COOL RUNNING JACKET **Outlet**

JustCool
 RWD

MAIN FEATURES

70 g/m²
 100% Polyester 330T Pongee
 Lightweight comfort fit
 Unisex fit
 Showerproof
 Windproof
 Reflective front zip with chin protector
 Reflective print detail at back neck and sleeve cuffs
 Two front zip pockets
 Curved drop tail for additional comfort
 Adjustable toggle hem
 Ideal for running and cycling
 Internal small hidden opening for ear phone cord feed

Suggested Decoration:

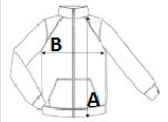
Heat transfer, Screen printing, Sublimation

Country Of Origin:

China


SIZE SPECIFICATION (CM)

	XS	S	M	L	XL	2XL
Pcs./	20	20	20	20	20	20
Body Length (A)	74.50	76	78	81	83	84
Chest Width (B)	48	51	54	57	60	63
Sleeve Length (C)	63	65	67	69	71	73


COLORS:

■ Sapphire Blue