

KA422 UNISEX 3-LAYER SOFTSHELL HOODED JACKET WITH REMOVABLE SLEEVES

KARIBAN

MAIN FEATURES

- 300 g/m²
- 95% polyester/5% elastane
- 3-layer breathable bonded fabric
- 3,000 g/m²/24 h and waterproof 8,000 mm
- Outer: 95% polyester/5% elastane
- Breathable membrane mid layer
- Inner layer: microfleece
- Fabric facilitates printing
- Slim fit
- Zip fastening
- 2 zipped pockets on the front and 1 zipped pocket on the front right as worn
- Detachable hood with press studs and drawstring
- Sleeves detachable with a zip
- Twin needle finish at cuffs and hem

Certifications:**Country Of Origin:**

Bangladesh

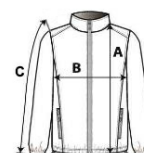


2025 : p. 266

2024 : p. 515

**SIZE SPECIFICATION (CM)**

	XS	S	M	L	XL	2XL	3XL	4XL	5XL
Pcs./	10	10	10	10	10	10	10	10	10
Body Length (A)	70.20	72.20	74.20	76.20	78.20	80.20	82.20	84.20	86.20
Chest Width (B)	49	52	55	58	61	64	67	70	73
Sleeve Length (C)	65	66	64	68	69	70	71	72	73

**COLORS:**

Black
 Camel
 Navy
 Red
 Titanium