

LE901 WOMEN'S CREW NECK FINE GAUGE COTTON PULLOVER



LEGEND®
CLASSICS

MAIN FEATURES

290 g/m²

100% Cotton Crew Neck Pullover

Soft 12-gauge cotton yarn for all-day comfort

Fully-fashioned: knitted to shape for a perfect fit

Pre-washed for improved size stability, machine washable

Ribbed cuffs and hem with added stretch nylon yarn for durability

Double-layered neck rib for extra comfort and shape retention

Tear-away label for easier personalization

Oeko-Tex Standard 100 certified for responsible manufacturing

Certifications:



Country Of Origin:

China



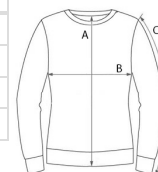
2026 : p. 227

2025 : p. 124



SIZE SPECIFICATION (CM)

	XS	S	M	L	XL	2XL	3XL
Pcs./📦	24	24	24	24	24	24	12
Body Length (A)	59	60	61.50	63	64.50	66	67.50
Chest Width (B)	42	45	48	51	54	57	60
Sleeve Length (C)	59.50	60.50	61.50	62.50	63.50	64.50	65.50



COLORS:

Black
 Bordeaux
 Deep Blue
 Light Melange Grey
 Navy
 Sand