

COMING SOON



- 340 g/m²
- Recycled polyester
- Oversized
- No Label
- Washable at 30°C

MAIN FEATURES:

Fabrication

80% Cotton, 20% Recycled Polyester

3-End Fleece

10 oz (340 GSM)

Pigment Dyed

Features

Heavyweight fleece

No drawcords

Two-panel hood with double-needle topstitching on all seams

1x1 ribbing at cuffs and waistband

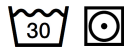
Under 5% shrinkage

No brand label, only a size tag. Care label in side seam

Oversized fit

The male models are wearing L-size item

The female models are wearing S-size item



TARIFF CODE: **61102091**

SUGGESTED DECORATION

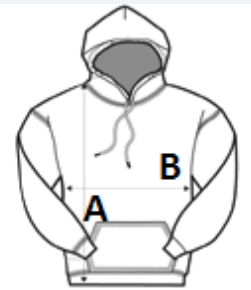
Digital printing (DTF), DTG, Embroidery, Screen printing

COUNTRY OF ORIGIN

Pakistan

SIZE SPECIFICATION (CM)

| | XS | S | M | L | XL | 2XL | 3XL |
|-----------------|-------|-------|-------|-------|-------|-------|-------|
| Pcs./📦 | 18 | 18 | 18 | 18 | 18 | 18 | 18 |
| Body Length (A) | 66.04 | 68.58 | 71.12 | 73.66 | 76.20 | 78.74 | 81.28 |
| Chest Width (B) | 45.72 | 50.80 | 55.88 | 60.96 | 66.04 | 71.12 | 76.20 |



COLORS:

■ Pigment Black

■ Pigment Midnight Navy

■ Pigment Pebble Blue

■ Pigment Burro

■ Pigment French Oak

■ Pigment Tornado

■ Pigment Lunar Rock