

LS17001 HEAVY CORE HOODIE **New**

LANE SEVEN
MAIN FEATURES560 g/m²**Fabrication**

3-End French Terry

16.5 oz (560 GSM)

65% Cotton, 35% Recycled Polyester

Features

Heavyweight 3-End French Terry

No drawcords

Double layered hood with single needle top stitch at neck seam

Raglan sleeves

2x1 ribbing at cuff and waistband

Tear away tags

Under 5% shrinkage

Suggested Decoration:

Digital printing (DTF), DTG, Embroidery, Screen printing

Country Of Origin:

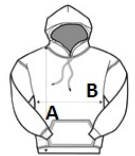
Pakistan



2026 : p. 178

**SIZE SPECIFICATION (CM)**

	XS	S	M	L	XL	2XL	3XL	4XL
Pcs./	12	12	12	12	12	12	12	12
Body Length (A)	66.04	68.58	71.12	73.66	76.20	78.74	81.28	
Chest Width (B)	45.72	50.80	55.88	60.96	66.04	71.12	76.20	

**COLORS:**
 Asphalt
 Black
 Cream