

LS19001 HEAVYWEIGHT PULLOVER HOODIE **New**



MAIN FEATURES

340 g/m²

Fabrication

3-End Fleece

10 oz (340 GSM)

70% Cotton, 30% Recycled Polyester

Features

100% combed cotton face yarn

Three panel hood with fleece lining for extra comfort

Double-needle topstitch on all seams

Dyed-to-match drawcords with knotted ends and metal eyelets

Kangaroo pocket

Ribbed cuffs and waistband

Tear away tags

Under 5% shrinkage

Suggested Decoration:

Digital printing (DTF), DTG, Embroidery, Screen printing

Country Of Origin:

Pakistan

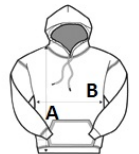


2026 : p. 178



SIZE SPECIFICATION (CM)

	XS	S	M	L	XL	2XL	3XL
Pcs./	24	24	24	24	24	24	24
Body Length (A)	69.85	72.39	74.93	77.47	80.01	82.55	85.09
Chest Width (B)	52.07	53.34	58.42	62.23	67.31	69.85	72.39



COLORS:

- Black
- Heather Grey
- Mushroom
- Navy Blue
- Sage
- Storm
- Teal
- White