

NS5005 LADIES' ECO-FRIENDLY HOODED SWEATSHIRT DRESSnative  spirit**MAIN FEATURES**

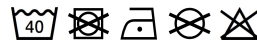
300 g/m²
 65% organic cotton / 35% recycled polyester
 Ringspun combed cotton
 Regular fit with dropped shoulders
 3-ply brushed fleece
 1/2 circle in the back
 Enzyme-washed
 Hood lined with main material
 Flat drawstrings with recycled metal tips
 Two minimalist pockets
 1x1 rib bottom hem and cuffs


Suggested Decoration:


Digital printing (DTF), Embroidery, Heat transfer, Screen printing

Certifications:**Country Of Origin:**

Bangladesh

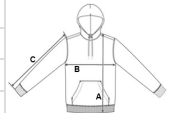


 2026 : p. 153

 2025 : p. 208

**SIZE SPECIFICATION (CM)**

	XS	S	M	L	XL
Pcs./ 	15	15	15	15	15
Body Length (A)	86	88	90	92	94
Chest Width (B)	55	58	61	64	67
Sleeve Length (C)	49	50	51	52	53

**COLORS:**

 Aquamarine  Black  Ivory