

NS609 UNISEX SHERPA-LINED WATERPROOF JACKET



native  spirit

MAIN FEATURES

- 100 g/m²
- 100% post-consumer recycled polyester
- Straight fit
- Waterproof 4000 mm
- Breathable 3000 g/m²/24h
- Product lined in ecru sherpa on all colours, hood and body
- Sleeves lined in ecru 210T taffeta in all colours and padded
- Recycled waterproof zip with double recycled metal zip puller
- Inner trim in main fabric
- Two piped side pockets with reverse zip
- 3-panel hood with drawstring and recycled inner stoppers
- Elasticated cuffs
- Left inner pocket with piping
- Inner personalisation patch in main fabric
- Chest and hem zip for customisation
- Fabric with inner membrane and heat-sealed seams that allow the product to be waterproof

Suggested Decoration:

Embroidery, Heat transfer

Certifications:



Country Of Origin:

Bangladesh

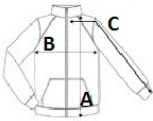


2025 : p. 348



SIZE SPECIFICATION (CM)

	XS	S	M	L	XL	2XL	3XL
Pcs./📦	10	10	10	10	10	10	10
Body Length (A)	87	89	91	93	95	97	99
Chest Width (B)	56.50	59.50	62.50	65.50	68.50	71.50	74.50
Sleeve Length (C)	64.50	65.50	66.50	67.50	68.50	69.50	70.50



COLORS:

 Black