

PA366 LADIES' HEATHER HOODED JACKET



PROACT.®

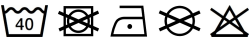
MAIN FEATURES

- 345 g/m²
 - Inner brushed knit in 100% polyester
 - 2 contrasting zipped front pockets and 1 contrasting zipped chest pocket
 - Hood with contrasting 100% cotton jersey lining and contrasting drawcord
 - Cuffs and hem with contrasting elasticated binding
 - Panels with topstitch finishing
- Certifications:**



STANDARD 100

Country Of Origin:
China, Bangladesh

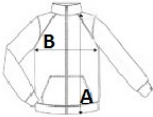


📅 2026 : p. 183
📅 2025 : p. 263



SIZE SPECIFICATION (CM)

	XS	S	M	L	XL	2XL	3XL
Pcs./📦	15	15	15	15	15	15	15
Body Length (A)	61.40	63.40	65.40	67.40	69.40	71.40	73.40
Chest Width (B)	44	47	50	53	56	59	62
Sleeve Length (C)	60	61	62	63	64	65	66



COLORS:

- Dark Grey Melange
- Light Grey Mélange
- Light Royal Blue Melange
- Navy Melange
- Red Melange