

PR217 MEN'S CROSS-DYE ROLL SLEEVE POPLIN BAR SHIRT **Outlet****MAIN FEATURES**105 g/m²**Fabric**

65% Polyester, 35% Cotton Plain Weave

105gsm

Features

Soft collar styling

Cross dye textured fabric appearance

Roll-up sleeve option with button fastening on the upper arm

Suggested Decoration:

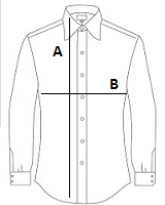
Embroidery, Heat transfer, Screen printing

Certifications:**Country Of Origin:**

Bangladesh

**SIZE SPECIFICATION (CM)**

	XS	S	M	L	XL	2XL	3XL
Pcs./	24	24	24	24	24	24	24
Body Length (A)	79	79	80	80	81	81	82
Chest Width (B)	50	52	57	62	67	72	77

**COLORS:**
☐ Grey Denim

☒ Indigo Denim