

155 g/m²

100% Cotton

Side seam

Washable at 40°C

2026 : p. 222
2025 : p. 100

MAIN FEATURES:

Fabric

100% Cotton Ring-Spun Denim Fine Twill

155gsm

Features

Contrast stitch details

Left chest button-down pocket

Buttoned cuff and buttoned sleeve guard

Curved hem

Modern fit



TARIFF CODE: 62053000

SUGGESTED DECORATION

Embroidery, Heat transfer, Screen printing

COUNTRY OF ORIGIN

Bangladesh

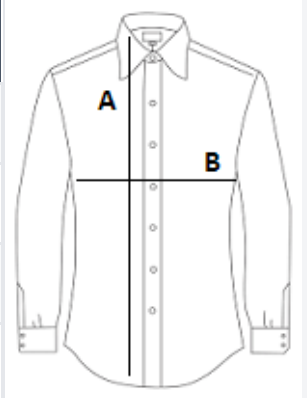


amfori BSCI

Sedex

SIZE SPECIFICATION (CM)

	XS	S	M	L	XL	2XL	3XL
Pcs./📦	24	24	24	24	24	24	24
Body Length (A)	79.00	79.00	80.00	80.00	81.00	81.00	82.00
Chest Width (B)	50.00	54.00	57.00	62.00	67.00	72.00	77.00
Neckline length	36.00	39.00	40.00	42.00	44.00	46.00	48.00



COLORS:

■ Indigo Denim

■ Black Denim