

**PR300** WOMEN'S LONG SLEEVE POPLIN BLOUSE**MAIN FEATURES**105 g/m<sup>2</sup>**Fabric**

65% Polyester, 35% Cotton, plain Poplin weave

Colour: 105gsm

White: 115gsm

**Features**

Soft collar styling

Rounded bottom hem

Bust and back darts

Pearlized buttons on Light Blue and White blouses

Self-colour buttons on rest

Double buttons on the cuff

Tailored fit

Easy care

**Suggested Decoration:**

Embroidery, Heat transfer, Screen printing

**Certifications:****Country Of Origin:**

Bangladesh

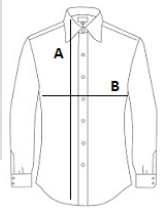


2026 : p. 215

2025 : p. 93

**SIZE SPECIFICATION (CM)**

	XXS	XS	S	M	L	XL	2XL	3XL	4XL	5XL	6XL	7XL	8XL
<b>Pcs./</b>	36	36	36	36	36	36	36	36	12	12	12	6	6
<b>Body Length (A)</b>	62	63	64	65	66	67	68	69	71	73	75	75	75
<b>Chest Width (B)</b>	44.50	47	49.50	52	54.50	57.50	59.50	62	64.50	67	69.50	74.50	77
<b>Supplier Sizing</b>	6	8	10	12	14	16	18	20	22	24	26	28	30

**COLORS:**
 Black

 White