

**PR307** WOMEN'S POPLIN SUPREME LONG SLEEVE SHIRT**MAIN FEATURES**125 g/m<sup>2</sup>**Fabric**

65% Polyester, 35% Cotton Poplin

125gsm

**Features**

Supreme Poplin

Soft collar styling

Rounded bottom hem

Bust and back darts

Double buttons on the cuff

Modern fit

Easy care

**Suggested Decoration:**

Embroidery, Heat transfer, Screen printing

**Certifications:**

amfori

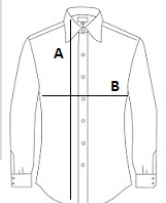
BSCI

Sedex<sup>2</sup>**Country Of Origin:**

Bangladesh

**SIZE SPECIFICATION (CM)**

	<b>XS</b>	<b>S</b>	<b>M</b>	<b>L</b>	<b>XL</b>	<b>2XL</b>	<b>3XL</b>	<b>4XL</b>	<b>5XL</b>
<b>Pcs./</b>	24	24	24	24	24	24	24	12	12
<b>Body Length (A)</b>	66	66.50	67	67.50	68	68.50	69	69.50	70
<b>Chest Width (B)</b>	48	50.50	53	55.50	58	60.50	63	65.50	68
<b>Neckline length</b>	40	41	42.50	44	45.50	47	48.50	50	51.50

**COLORS:**
 Light Blue