

155 g/m²

100% Cotton

Side seam

Washable at 40°C

2026 : p. 222
2025 : p. 100

MAIN FEATURES:

Fabric

100% Cotton Ring-Spun Denim

155gsm

Features

Contrast stitch details

Two chest pockets

Buttoned cuff and buttoned sleeve guard

Curved hem

Modern fit



TARIFF CODE: 62053000

SUGGESTED DECORATION

Embroidery, Heat transfer, Screen printing

COUNTRY OF ORIGIN

Bangladesh

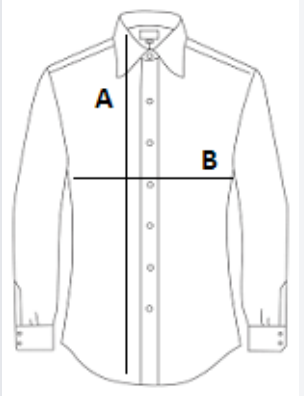


amfori BSCI

Sedex

SIZE SPECIFICATION (CM)

	XS	S	M	L	XL	2XL	3XL
Pcs./📦	24	24	24	24	24	24	24
Body Length (A)	65.00	66.00	67.00	68.00	69.00	70.00	71.00
Chest Width (B)	46.00	48.50	51.00	53.50	56.00	58.50	61.00
Neckline length	40.00	41.50	43.00	44.50	46.00	47.50	49.00



COLORS:

■ Indigo Denim

■ Black Denim